

How do I setup my RealCare Baby 3? Step 1, charge Baby.

1. Single charger – Plug single charger into a wall outlet, or power strip, and plug charger into the back of one Baby.



5 Baby Charger – Plug the power supply for the 5 Baby charger into the red plug on the multi-splitter.

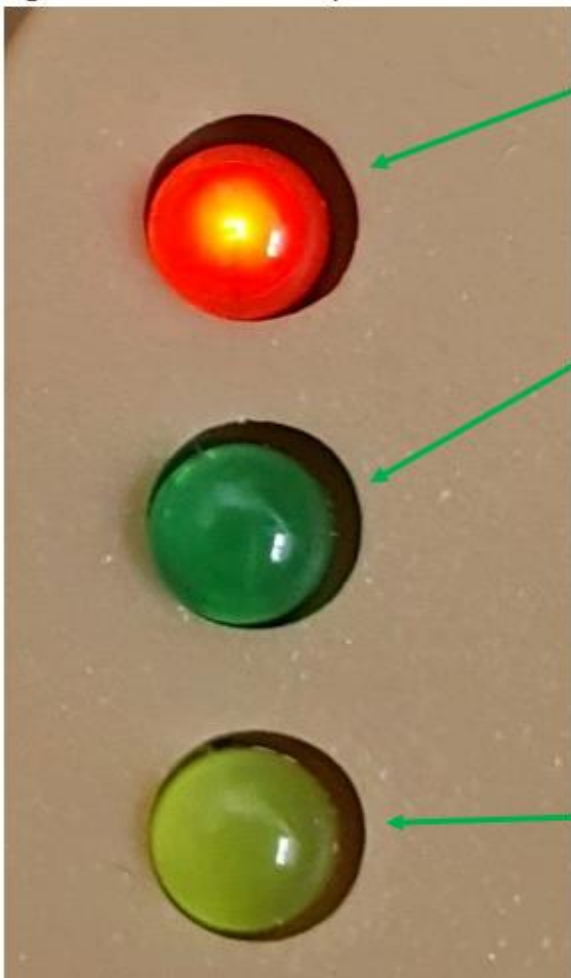


Do NOT plug the single charger into the multi-splitter

2. Plug the 5 Baby Charger into a wall outlet or power strip and connect up to 5 Babies.



3. Lights on back of the Baby



- Red Light – Battery indicator
 - Off – No power, batteries are dead
 - Solid Red – 60% or higher, full charge
 - Flashing Red – Below 50%
- Green Light – Charging indicator
 - Only turns on when plugged into charger
 - Turns off when charger is unplugged or when Baby reaches full charge
 - Solid Green – Batteries are charging
 - Flashing Green – Batteries are warming up
 - Green light flashing for longer than 15 minutes – Batteries are NOT charging. Contact Product Support
- Yellow Light – Communication indicator
 - Always flickers once every 15-20 seconds
 - Turns solid when adding Baby to Control Center

4. Full charge takes 4 to 6 hours.

Step 2, install the Control Center.

1. Click on the RealCare Baby & Control Center web link: <https://www.realityworks.com/knowledge-base/realcare-baby-control-center/>
2. Click on the box for either Windows or Mac.

Home | RealCare Baby & Control Center

RealCare Baby & Control Center

Created On August 5, 2019 by realityworks_webadmin

< Back

[REALCARE CONTROL CENTER SOFTWARE – HELP GUIDE](#)

Software Update/Download

NOTE: You may need to contact your IT personnel to enter the administrative rights to complete this download.

Operating systems supported for Control Center Software 4.5:

- Windows 10
- Macintosh OS – 10.12, 10.13, 10.14 and 10.15

[WINDOWS](#) [MAC](#)

[REALCARE BABY® SYSTEM REQUIREMENTS](#)

[COMMUNICATION ADAPTER DRIVER DOWNLOAD](#)

NOTE: Please click on the button above to download and install the Communication Adapter Driver if needed.

3. Click download to download the installation file.


RealCare® Control Center software update.
Version 4.5.0.32

[DOWNLOAD](#)

If you do not have a high-speed internet connection to download the software or would like to have a USB drive, please contact Product Support at 800.830.1416 or 715-830.2040


4. After the file is downloaded, open the file and follow along with standard installation procedure for either Windows or Mac. You may need your Network Administrators to complete the installation.

Step 3, Open the Control Center and follow “Getting Started” walk through.

1. Plug in the Communication Adapter, wait 15-20 seconds and then open the Control Center.
2. Follow “Getting Started with Control Center” walk through.
3. Ensure that the Communication Adapter is recognized. Communication Adapter device icon at the bottom right corner should be green 

Step 4, add Baby to the Control Center.

Prerequisites

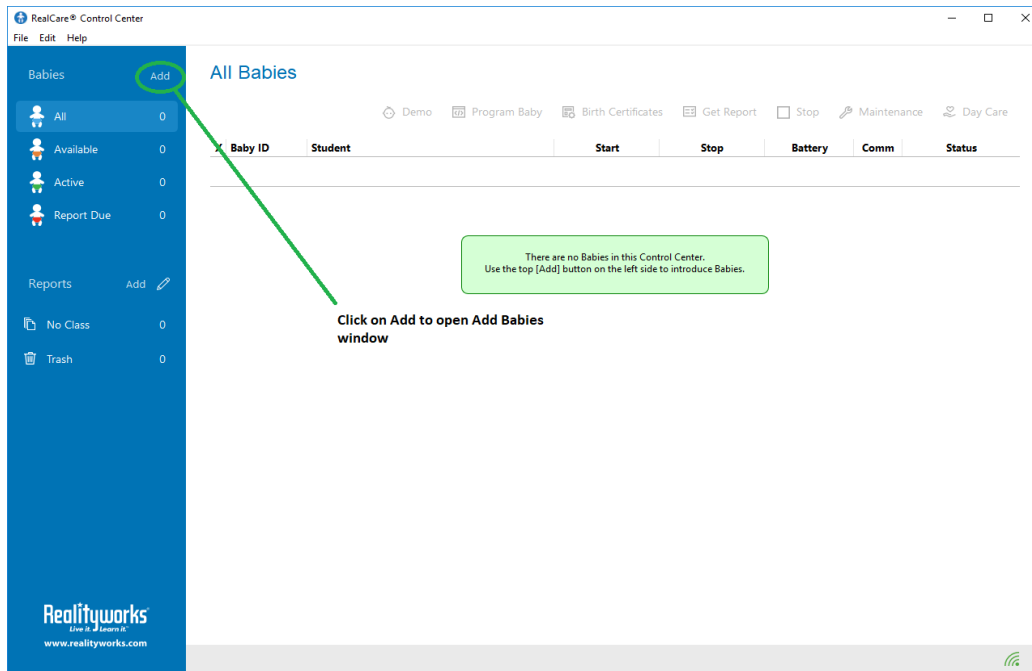
- The red light on the back of the Baby must be solid or flashing
- The Control Center must be open, and make sure the Communication Adapter icon at the bottom right corner is green 
- Have a paperclip

Steps to Perform

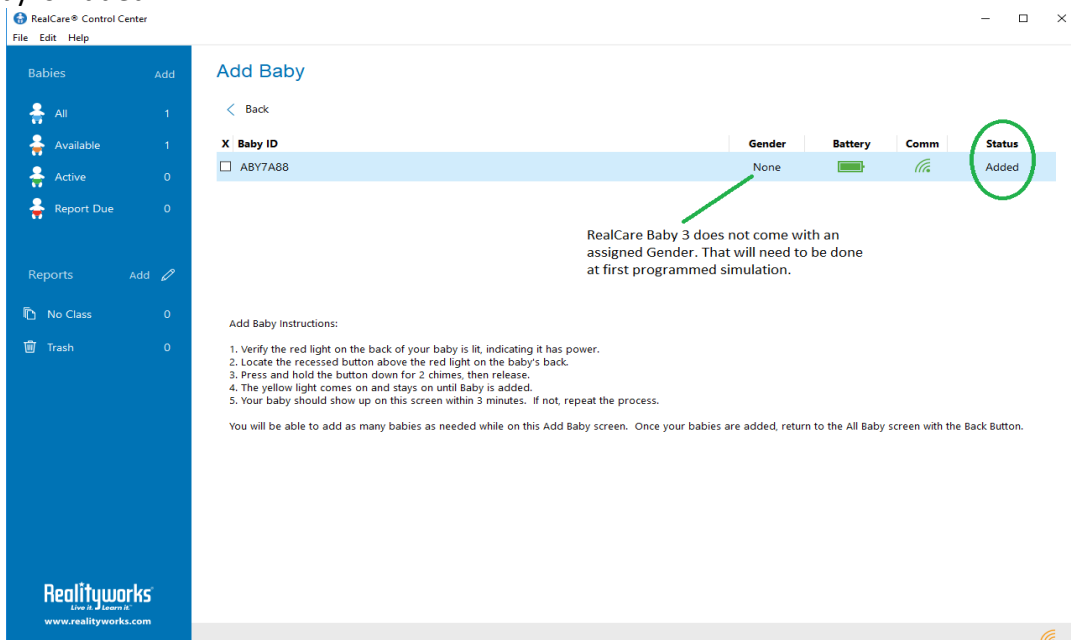
1. Locate the Emergency Stop Switch. It is located right above the lights on the back of Baby. It is a small round opening.



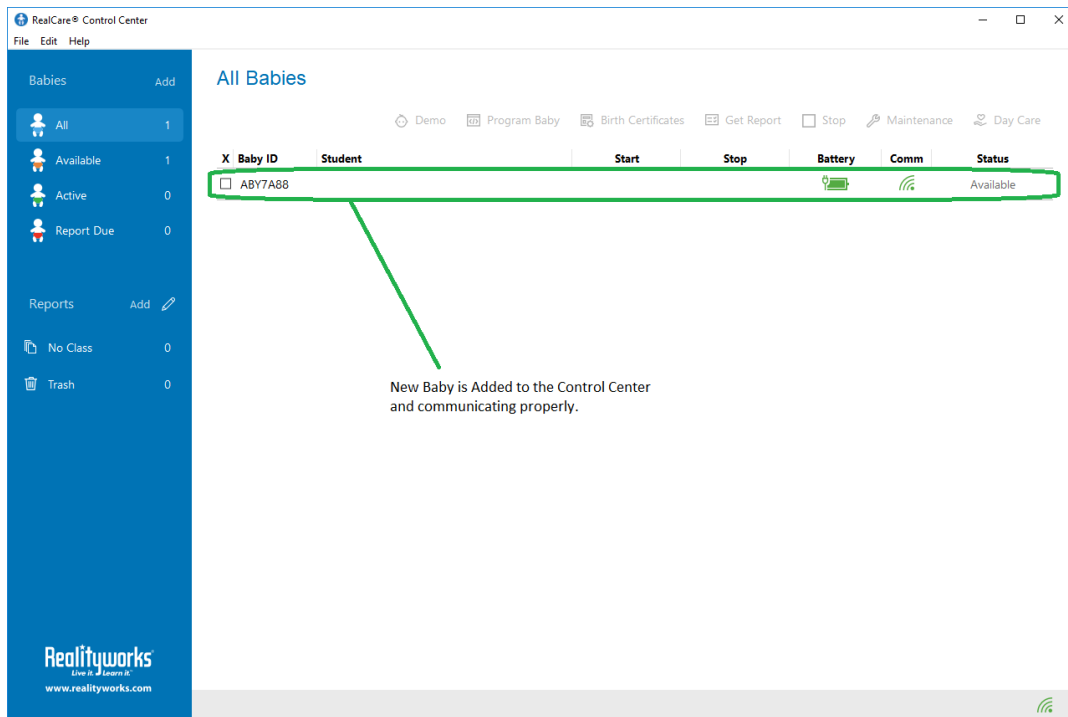
2. Use a paperclip, press and hold the Emergency Stop Switch down for 2 chimes in a row and release.
3. The yellow light on the back of Baby should come on and stay on. If it doesn't, repeat Step 2.
4. On the Control Center Software on your computer, click on the **[Add]** button.



5. Baby should appear in the Add Baby window, the Status Column on the far-right side of the window should indicate Baby is Added.



- Click on the All Babies window and this Baby should appear in the window with a green communication indicator in the COMM column.



For additional assistance and video tutorials visit our website:

www.realityworks.com/support/